

# Valve Replacement Parts

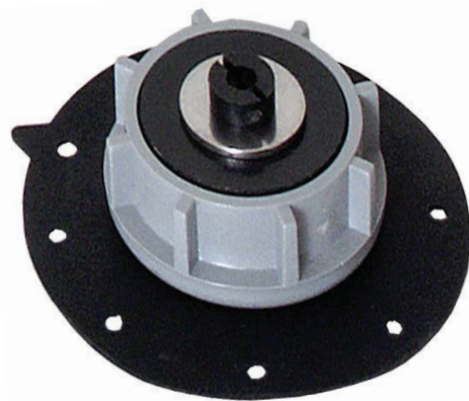
- HIT Products 24 VAC solenoid (part # 504-050) interchangeable with most all Hardie, Irritrol, Richdel, LR Nelson and Orbit Valves
- 200 Series Valve replacement diaphragms interchangeable with Hardie, Irritrol, Richdel, 205, 216 and 217 series valves
- Jar Top diaphragms (part # 8400-D) and valve parts are interchangeable with Richdel, Irritrol, Jar Top series valves
- 12 VDC, 110 VAC with conduit cover. Solenoids available in  $\frac{3}{4}$  -20 thread



**391-200**  
2" Diaphragm for HIT 500 Series flow control valve



**504-050**  
Solenoid 24 VAC 60 Hz  
.35 Amp Inrush  
.25 Amp Holding  
Compatible with 200, 300, 500 Series, Jar Top, and Richdel™, Hardi™, Irritrol™ valves



**210-D**  
1" Diaphragm Assembly for 200 series PVC vales, also compatible with Richdel™, Hardi™, Irritrol™ 205 series valves



**504-059**  
Solenoid 110 VAC 60 Hz  
Conduit Cap  
.35 Amp Inrush  
.25 Amp Holding



**222**  
Universal Manual Bleed Adapter  
Includes: Manual bleed adapter, handle and O-ring



# Valve Replacement Parts



**391-115**  
1" Diaphragm for HIT 310 and 500  
Series non-flow control valve



**215-D**  
1 - 1/2" Diaphragm Assembly for 200  
series PVC valves. Also compatible  
with Richdel™, Hardie™, Irritrol™ 216  
series valves

## ORDER SPECIFICATION GUIDE : PartNumber

### Hit Valve Diaphragms PartNumber

- 210-D = 1" Diaphragm Assembly for 200 Series PVC valves, also compatible with Richdel™, Hardie™, Irritrol™ 205 Series valves.
- 215-D = 1 - 1/2" Diaphragm Assembly for 200 Series PVC valves, also compatible with Richdel™, Hardie™, Irritrol™ 216 Series valves.
- 220-D = 2" Diaphragm Assembly for 200 Series PVC valves, also compatible with Richdel™, Hardie™, Irritrol™ 217 Series valves.
- 222 = Universal Manual Bleed Adapter Assembly. Includes Manual Bleed Adapter, Hand, and o-ring
- 391-115 = 1" Diaphragm for HIT 310 and 500 Series non-flow control valve
- 391-116 = 1" Diaphragm for HIT 310 and 500 Series flow control valve
- 391-150 = 1 - 1/2" Diaphragm for HIT 500 Series control valve
- 391-200 = 2" Diaphragm for HIT 500 Series control valve
- 8400-D = 1" Diaphragm Assembly for Jar Top Valves manufactured by HIT Products PrainPro. Also compatible with Richdel™ and Irritrol™

### Solenoids PartNumber

- 504-050 = Solenoid 24 VAC 60Hz .35 amp inrush, .25 amp holding. Compatible with 200, 300, 500 Series, Jar top. Also compatible with Richdel™, Hardie™, and Irritrol™ valves.
- 504-055 = 12-volt DC solenoid. 7 Watts.
- 504-058 = Solenoid 24 VAC 60Hz .35 amp inrush, .25 amp holding. Compatible with 100 Series and ASV HIT Valves.
- 504-059 = Solenoid 110 VAC 60 Hz. Female conduit connection compatible with 200, 300, 500 Series HIT valves. Also compatible with Richdel™, Hardie™, and Irritrol™ valves

